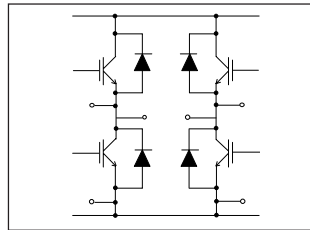


Features

- UltraFast Non Punch Through (NPT) Technology
- Positive $V_{CE(ON)}$ Temperature Coefficient
- 10 μ s Short Circuit Capability
- HEXFRED™ Antiparallel Diodes with UltraSoft Reverse Recovery
- Low Diode V_F
- Square RBSOA
- Aluminum Nitride DBC
- Very Low Stray Inductance Design for High Speed Operation
- UL approved (File E78996)



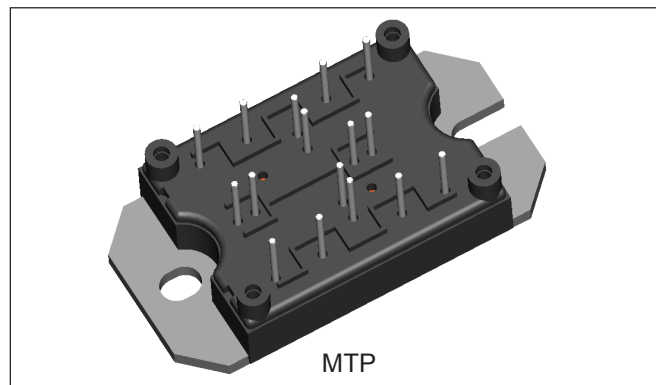
$$V_{CES} = 1200V$$

$$I_C = 40A$$

$$T_C = 25^\circ C$$

Benefits

- Optimized for Welding, UPS and SMPS Applications
- Rugged with UltraFast Performance
- Benchmark Efficiency above 20KHz
- Outstanding ZVS and Hard Switching Operation
- Low EMI, requires Less Snubbing
- Excellent Current Sharing in Parallel Operation
- Direct Mounting to Heatsink
- PCB Solderable Terminals
- Very Low Junction-to-Case Thermal Resistance



Absolute Maximum Ratings

Parameters		Max	Units
V_{CES}	Collector-to-Emitter Breakdown Voltage	1200	V
I_C	Continuos Collector Current	@ $T_C = 25^\circ C$	40
		@ $T_C = 106^\circ C$	20
I_{CM}	Pulsed Collector Current	100	
I_{LM}	Clamped Inductive Load Current	100	
I_F	Diode Continuous Forward Current	@ $T_C = 106^\circ C$	25
I_{FM}	Diode Maximum Forward Current	100	
V_{GE}	Gate-to-Emitter Voltage	± 20	V
V_{ISOL}	RMS Isolation Voltage, Any Terminal to Case, $t = 1$ min	2500	
P_D	Maximum Power Dissipation (only IGBT)	@ $T_C = 25^\circ C$	240
		@ $T_C = 100^\circ C$	96

Electrical Characteristics @ T_J = 25°C (unless otherwise specified)

Parameters	Min	Typ	Max	Units	Test Conditions
V _{(BR)CES} Collector-to-Emitter Breakdown Voltage	1200			V	V _{GE} = 0V, I _C = 250μA
ΔV _{(BR)CES} /ΔT _J Temperature Coeff. of Breakdown Voltage		+1.3		V/°C	V _{GE} = 0V, I _C = 3mA (25-125°C)
V _{CE(ON)} Collector-to-Emitter Saturation Voltage		3.29	3.59	V	V _{GE} = 15V, I _C = 20A
		4.42	4.66		V _{GE} = 15V, I _C = 40A
		3.87	4.11		V _{GE} = 15V, I _C = 20A T _J = 125°C
		5.32	5.70		V _{GE} = 15V, I _C = 40A T _J = 125°C
		3.99	4.27		V _{GE} = 15V, I _C = 20A T _J = 150°C
V _{GE(th)} Gate Threshold Voltage	4		6	V	V _{CE} = V _{GE} , I _C = 250μA
ΔV _{GE(th)} /ΔT _J Temperature Coeff. of Threshold Voltage		-14		mV/°C	V _{CE} = V _{GE} , I _C = 3mA (25-125°C)
g _{fe} Transconductance		17.5		S	V _{CE} = 50V, I _C = 20A, PW = 80μs
I _{CES} Zero Gate Voltage Collector Current ⁽¹⁾			250	μA	V _{GE} = 0V, V _{CE} = 1200V, T _J = 25°C
		0.7	3.0	mA	V _{GE} = 0V, V _{CE} = 1200V, T _J = 125°C
		2.9	9.0		V _{GE} = 0V, V _{CE} = 1200V, T _J = 150°C
I _{GES} Gate-to-Emitter Leakage Current			±250	nA	V _{GE} = ± 20V

(1) I_{CES} includes also opposite leg overall leakage

Switching Characteristics @ T_J = 25°C (unless otherwise specified)

Parameters	Min	Typ	Max	Units	Test Conditions
Q _g Total Gate Charge (turn-on)		176	264	nC	I _C = 20A V _{CC} = 600V V _{GE} = 15V
Q _{ge} Gate-Emitter Charge (turn-on)		19	30		
Q _{gc} Gate-Collector Charge (turn-on)		89	134		
E _{on} Turn-On Switching Loss		513	770	μJ	V _{CC} = 600V, I _C = 20A V _{GE} = 15V, R _g = 5Ω, L = 200μH T _J = 25°C, Energy losses include tail and diode reverse recovery
E _{off} Turn-Off Switching Loss		402	603		
E _{tot} Total Switching Loss		915	1373		
E _{on} Turn-On Switching Loss		930	1395	μJ	V _{CC} = 600V, I _C = 20A V _{GE} = 15V, R _g = 5Ω, L = 200μH T _J = 125°C, Energy losses include tail and diode reverse recovery
E _{off} Turn-Off Switching Loss		610	915		
E _{tot} Total Switching Loss		1540	2310		
C _{ies} Input Capacitance		2530	3790	pF	V _{GE} = 0V V _{CC} = 30V f = 1.0 MHz
C _{oes} Output Capacitance		344	516		
C _{res} Reverse Transfer Capacitance		78	117		
RBSOA Reverse Bias Safe Operating Area	full square				T _J = 150°C, I _C = 120A V _{CC} = 1000V, V _p = 1200V R _g = 5Ω, V _{GE} = +15V to 0V
SCSOA Short Circuit Safe Operating Area	10			μs	T _J = 150°C V _{CC} = 900V, V _p = 1200V R _g = 5Ω, V _{GE} = +15V to 0V

Diode Characteristics @ T_J = 25°C (unless otherwise specified)

Parameters	Min	Typ	Max	Units	Test Conditions
V _{FM} Diode Forward Voltage Drop		2.48	2.94	V	I _C = 20A
		3.28	3.90		I _C = 40A
		2.44	2.84		I _C = 20A, T _J = 125°C
		3.45	4.14		I _C = 40A, T _J = 125°C
		2.21	2.93		I _C = 20A, T _J = 150°C
E _{rec} Reverse Recovery Energy of the Diode		420	630	μJ	V _{GE} = 15V, R _g = 5Ω, L = 200μH
trr Diode Reverse Recovery Time		98	150	ns	V _{CC} = 600V, I _C = 20A
Irr Peak Reverse Recovery Current		33	50	A	T _J = 125°C

Thermal- Mechanical Specifications

Parameters	Min	Typ	Max	Units
T _J Operating Junction Temperature Range	- 40		150	°C
T _{STG} Storage Temperature Range	- 40		125	
R _{thJC} Junction-to-Case	IGBT		0.35	°C/ W
	Diode		0.40	
R _{thCS} Case-to-Sink (Heatsink Compound Thermal Conductivity = 1 W/mK)	Module		0.06	
Clearance (external shortest distance in air between two terminals)	5.5			mm
Creepage (shortest distance along external surface of the insulating material between 2 terminals)	8			
T Mounting Torque (2)		3 ± 10%		Nm
Wt Weight		66		g (oz)

(2) A mounting compound is recommended and the torque should be checked after 3 hours to allow for the spread of the compound. Lubricated threads

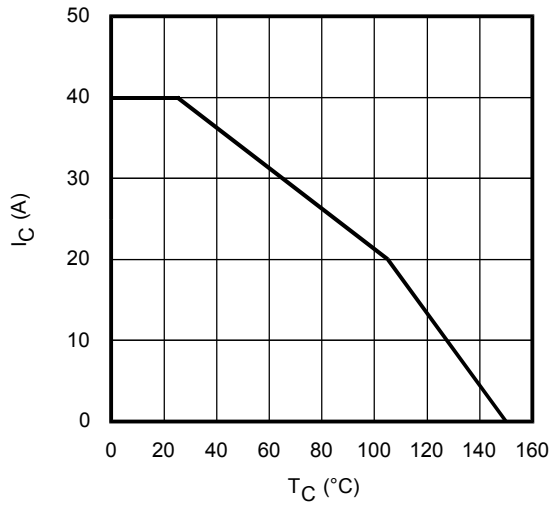


Fig. 1 - Maximum DC Collector Current vs. Case Temperature

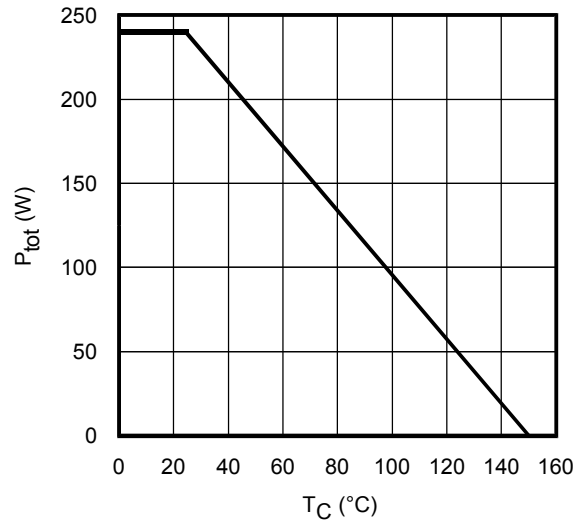


Fig. 2 - Power Dissipation vs. Case Temperature

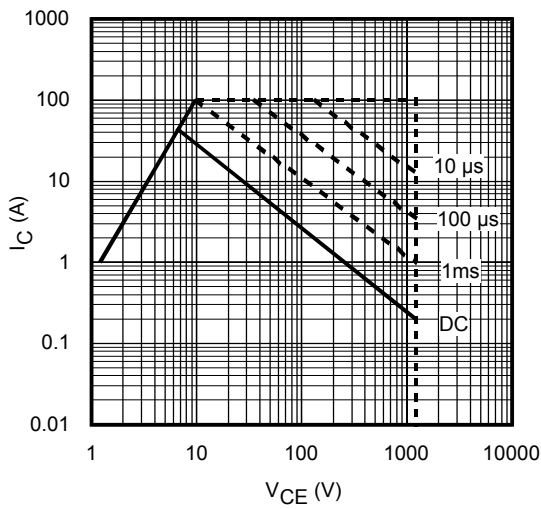


Fig. 3 - Forward SOA
 $T_C = 25^\circ\text{C}$; $T_J \leq 150^\circ\text{C}$

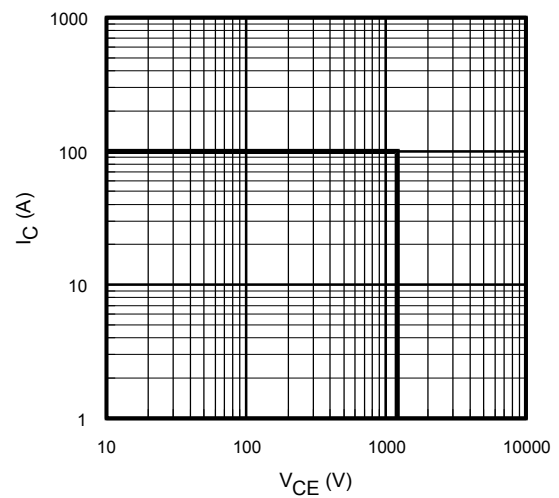


Fig. 4 - Reverse Bias SOA
 $T_J = 150^\circ\text{C}$; $V_{GE} = 15\text{V}$

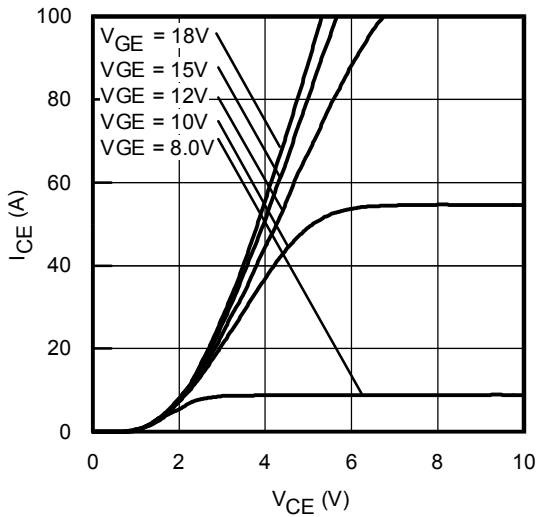


Fig. 5 - Typ. IGBT Output Characteristics
 $T_J = -40^\circ\text{C}$; $t_p = 80\mu\text{s}$

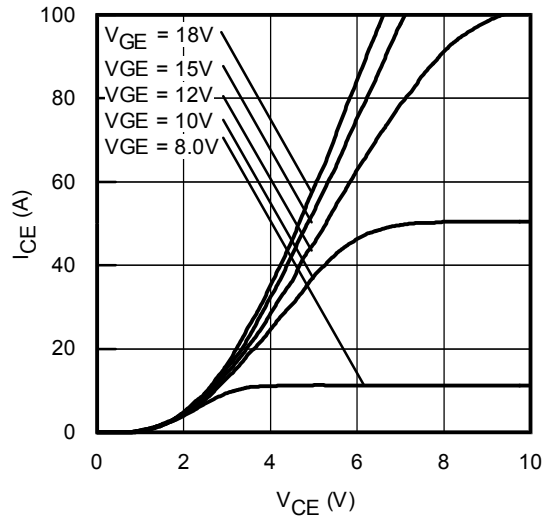


Fig. 6 - Typ. IGBT Output Characteristics
 $T_J = 25^\circ\text{C}$; $t_p = 80\mu\text{s}$

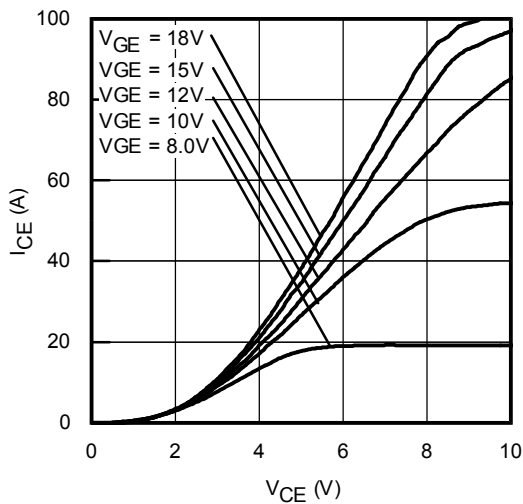


Fig. 7 - Typ. IGBT Output Characteristics
 $T_J = 125^\circ\text{C}$; $t_p = 80\mu\text{s}$

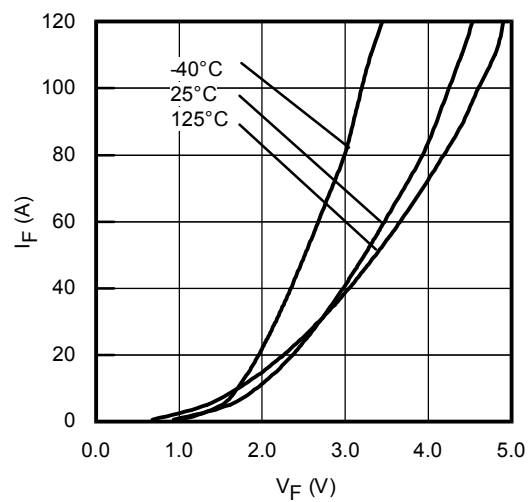


Fig. 8 - Typ. Diode Forward Characteristics
 $t_p = 80\mu\text{s}$

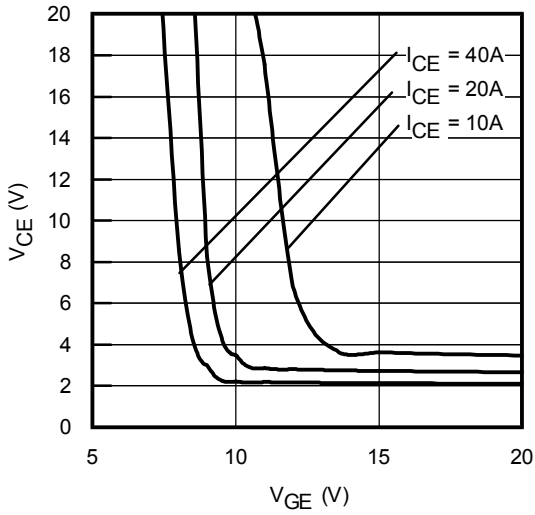


Fig. 9 - Typical V_{CE} vs. V_{GE}
 $T_J = -40^\circ\text{C}$

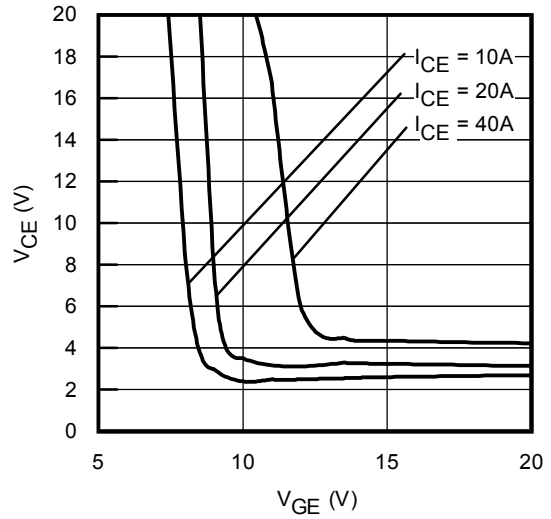


Fig. 10 - Typical V_{CE} vs. V_{GE}
 $T_J = 25^\circ\text{C}$

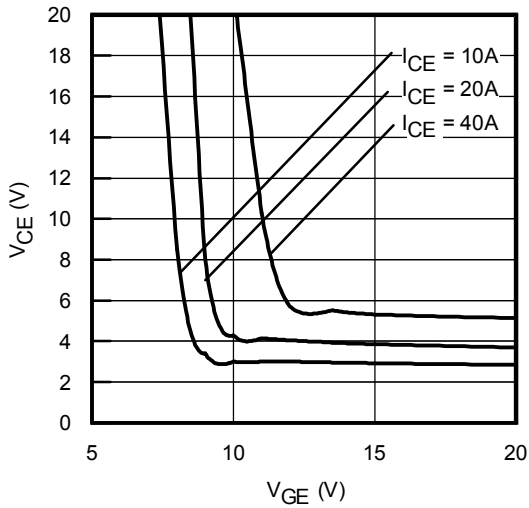


Fig. 11 - Typical V_{CE} vs. V_{GE}
 $T_J = 125^\circ\text{C}$

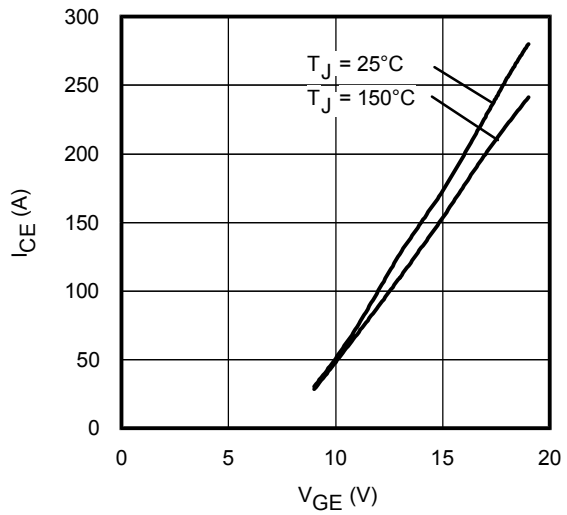


Fig. 12 - Typ. Transfer Characteristics
 $V_{CE} = 50\text{V}$; $t_p = 10\mu\text{s}$

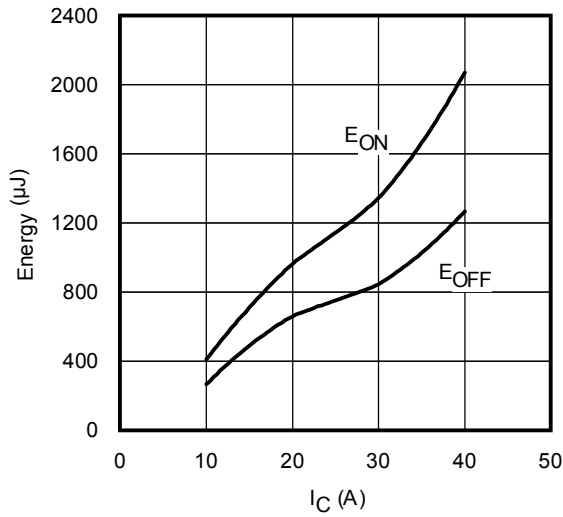


Fig. 13 - Typ. Energy Loss vs. I_C
 $T_J = 150^\circ\text{C}$; $L = 1.4\text{mH}$; $V_{CE} = 400\text{V}$
 $R_G = 5\Omega$; $V_{GE} = 15\text{V}$

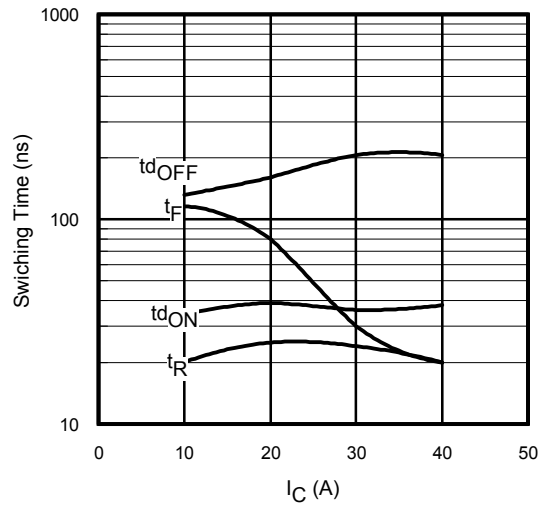


Fig. 14 - Typ. Switching Time vs. I_C
 $T_J = 150^\circ\text{C}$; $L = 1.4\text{mH}$; $V_{CE} = 400\text{V}$
 $R_G = 100\Omega$; $V_{GE} = 15\text{V}$

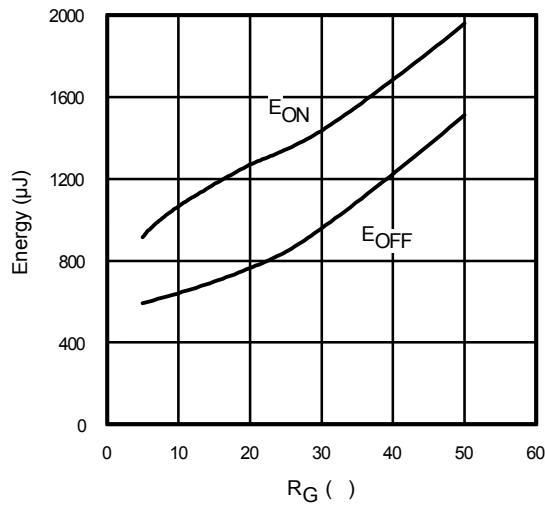


Fig. 15 - Typ. Energy Loss vs. R_G
 $T_J = 150^\circ\text{C}$; $L = 1.4\text{mH}$; $V_{CE} = 400\text{V}$
 $I_{CE} = 5.0\text{A}$; $V_{GE} = 15\text{V}$

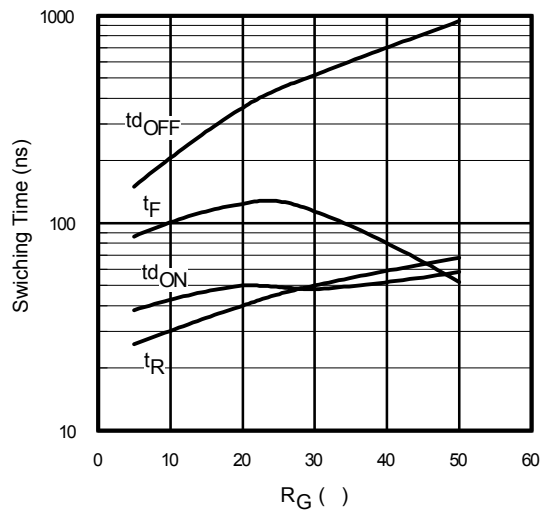


Fig. 16 - Typ. Switching Time vs. R_G
 $T_J = 150^\circ\text{C}$; $L = 1.4\text{mH}$; $V_{CE} = 400\text{V}$
 $I_{CE} = 5.0\text{A}$; $V_{GE} = 15\text{V}$

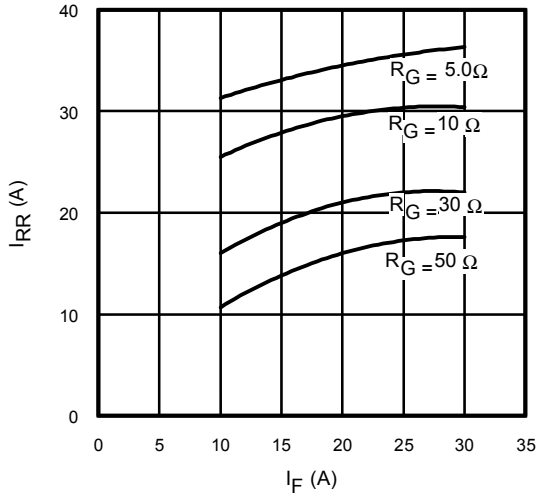


Fig. 17 - Typical Diode I_{RR} vs. I_F
 $T_J = 150^\circ\text{C}$

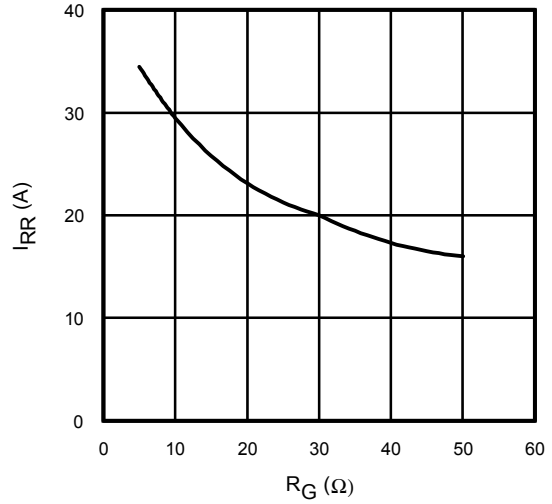


Fig. 18 - Typical Diode I_{RR} vs. R_G
 $T_J = 150^\circ\text{C}; I_F = 5.0\text{A}$

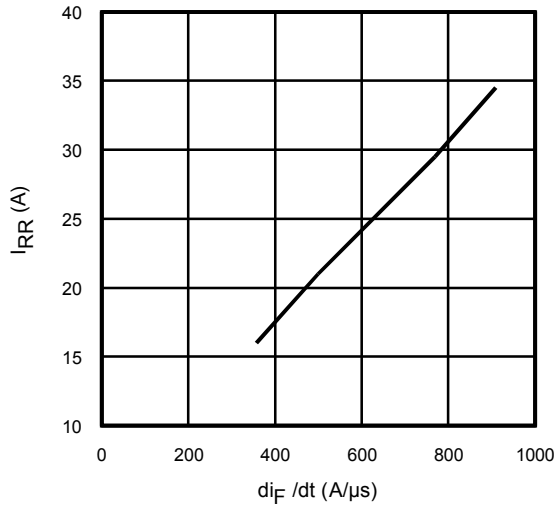


Fig. 19- Typical Diode I_{RR} vs. di_F/dt
 $V_{CC} = 400\text{V}; V_{GE} = 15\text{V};$
 $I_{CE} = 5.0\text{A}; T_J = 150^\circ\text{C}$

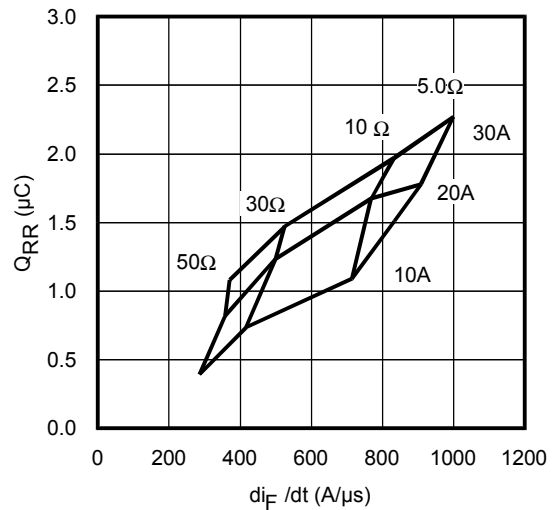


Fig. 20 - Typical Diode Q_{RR}
 $V_{CC} = 400\text{V}; V_{GE} = 15\text{V}; T_J = 150^\circ\text{C}$

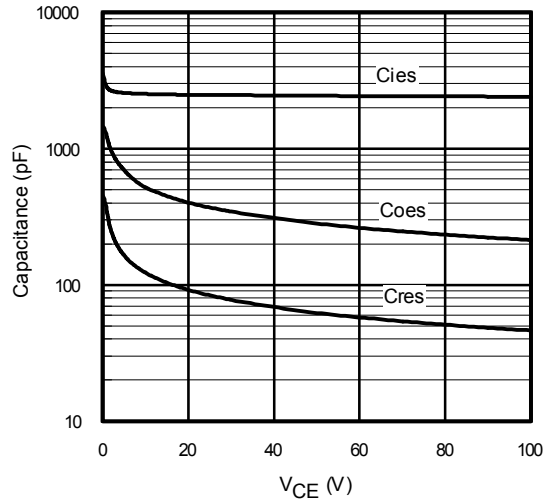


Fig. 21 - Typ. Capacitance vs. V_{CE}
 V_{GE} = 0V; f = 1MHz

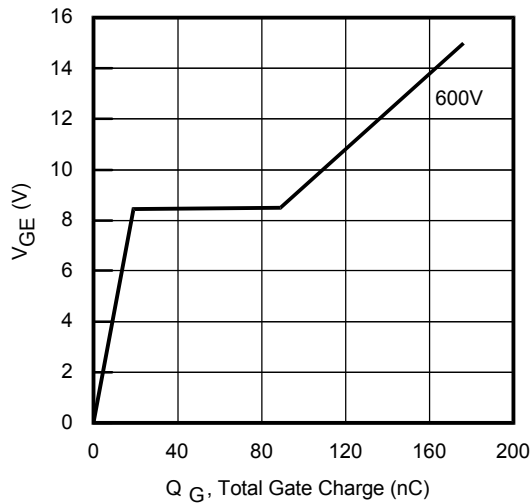


Fig. 22 - Typical Gate Charge vs. V_{GE}
 I_{CE} = 5.0A; L = 600μH

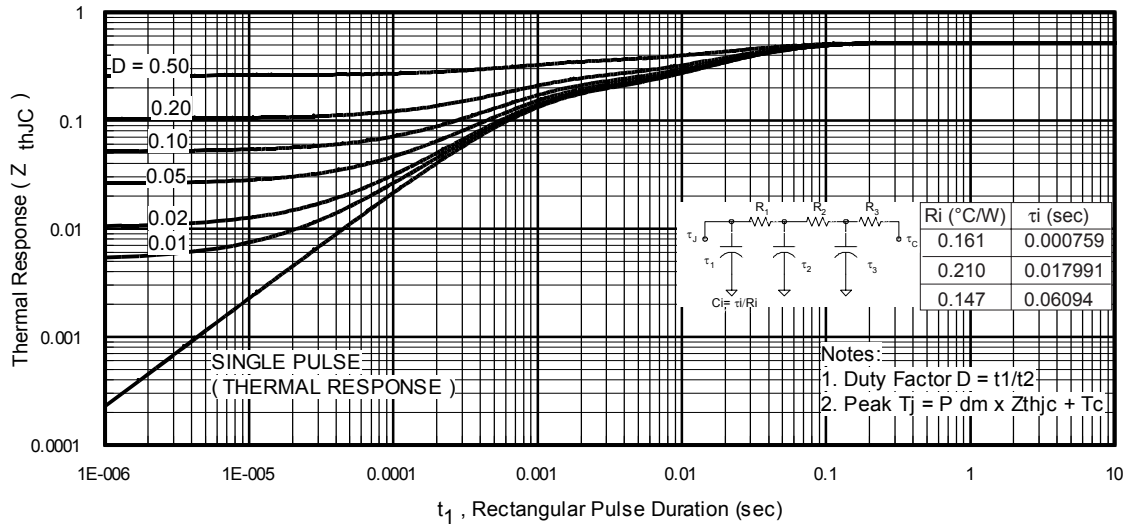


Fig 23. Maximum Transient Thermal Impedance, Junction-to-Case (IGBT)

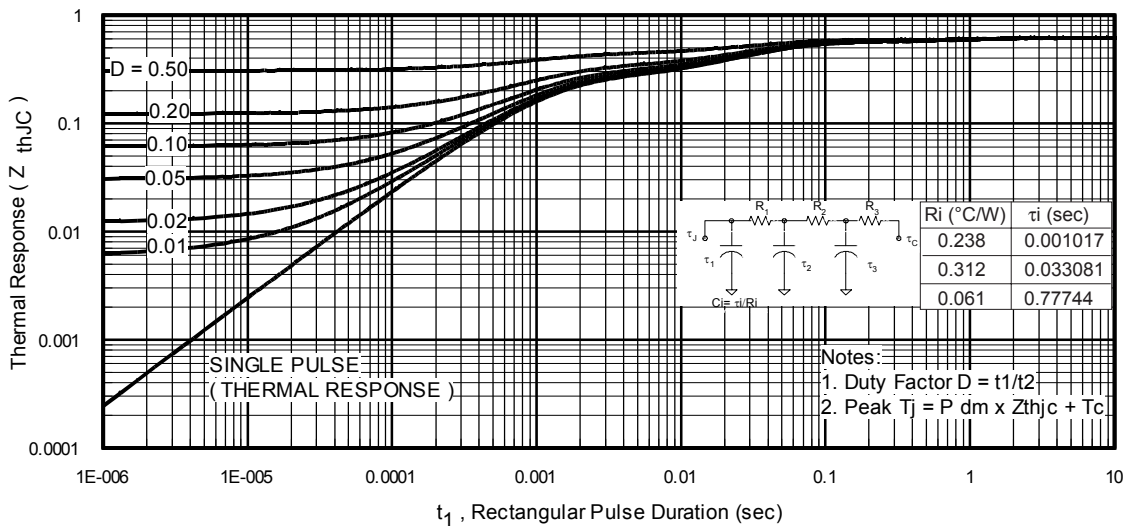


Fig 24. Maximum Transient Thermal Impedance, Junction-to-Case (DIODE)

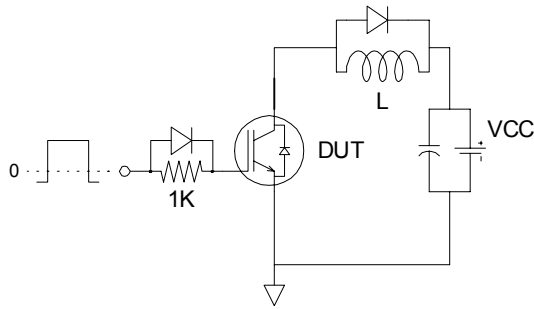


Fig. CT.1 - Gate Charge Circuit (turn-off)

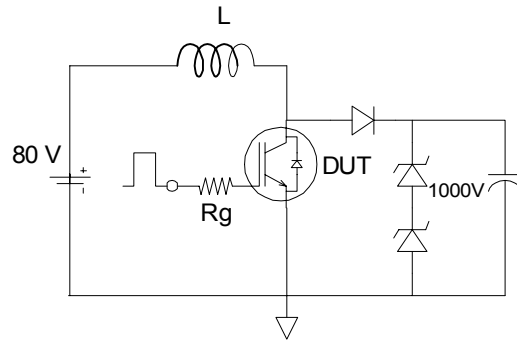


Fig. CT.2 - RBSOA Circuit

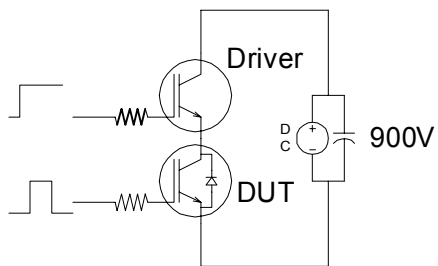


Fig. CT.3 - S.C. SOA Circuit

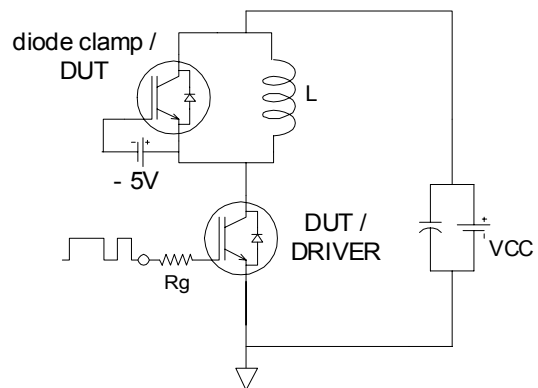
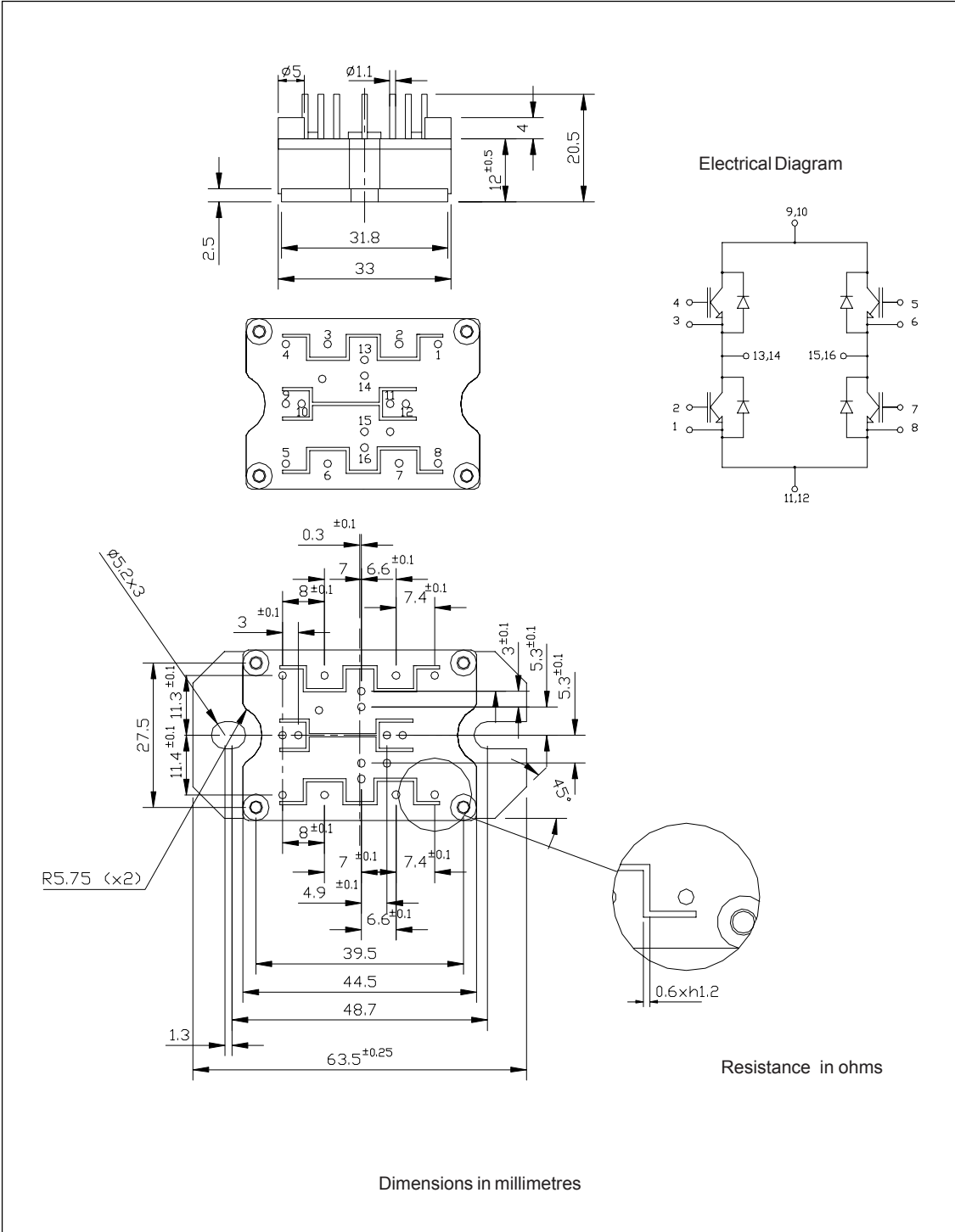


Fig. CT.4 - Switching Loss Circuit

Outline Table



Ordering Information Table

Device Code				
20	MT	120	U	F
①	②	③	④	⑤
1	-	Current rating	(20 = 20A)	
2	-	Essential Part Number		
3	-	Voltage code	(120 = 1200V)	
4	-	Speed/ Type	(U = Ultra Fast IGBT)	
5	-	Circuit Configuration	(F = Full Bridge)	
	-	Special Option		

Data and specifications subject to change without notice.
This product has been designed and qualified for Industrial Level.
Qualification Standards can be found on IR's Web site.

International
IR Rectifier

IR WORLD HEADQUARTERS: 233 Kansas St., El Segundo, California 90245, USA Tel: (310) 252-7105
TAC Fax: (310) 252-7309

Visit us at www.irf.com for sales contact information. 01/03