



Please note that Cypress is an Infineon Technologies Company.

The document following this cover page is marked as “Cypress” document as this is the company that originally developed the product. Please note that Infineon will continue to offer the product to new and existing customers as part of the Infineon product portfolio.

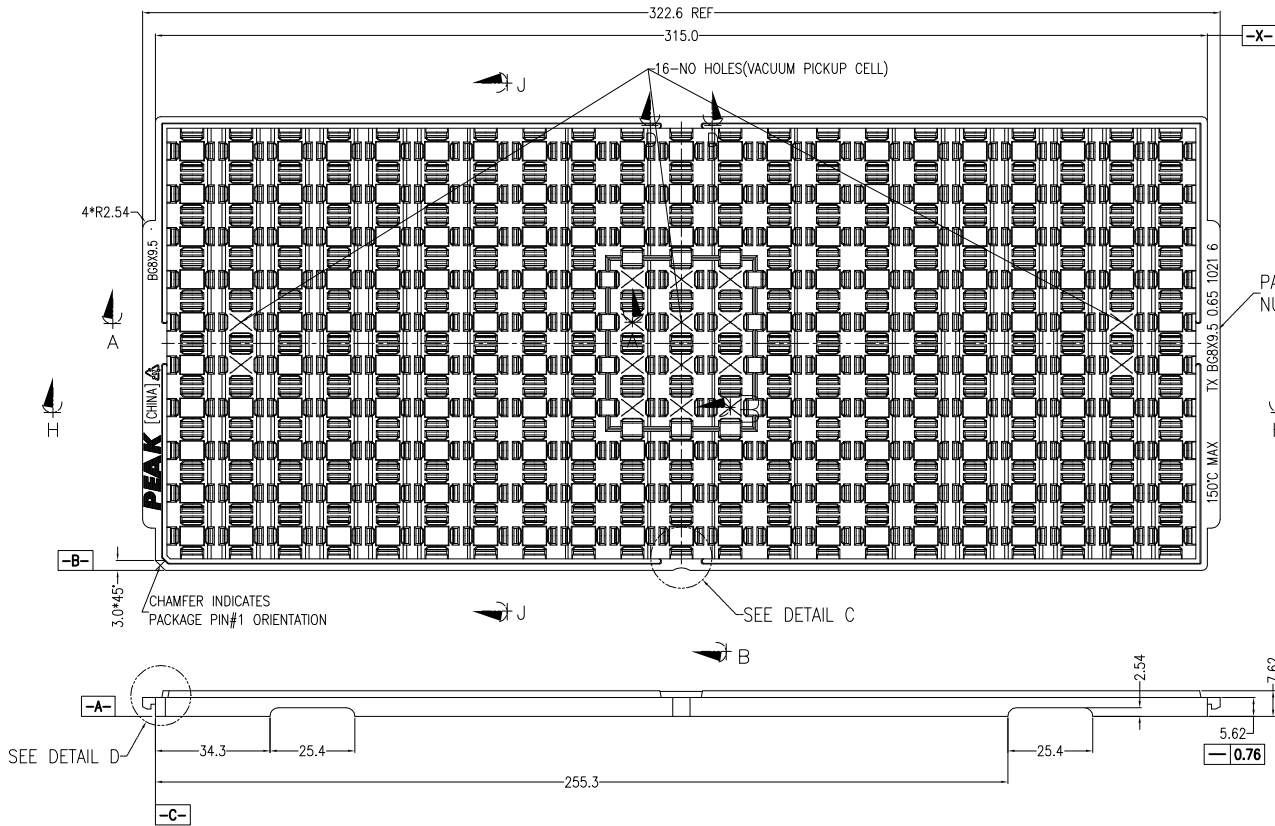
Continuity of document content

The fact that Infineon offers the following product as part of the Infineon product portfolio does not lead to any changes to this document. Future revisions will occur when appropriate, and any changes will be set out on the document history page.

Continuity of ordering part numbers


Infineon continues to support existing part numbers. Please continue to use the ordering part numbers listed in the datasheet for ordering.

REVISIONS						
PAGE	ZONE	REV	ECN	DESCRIPTION	DATE	APPROVED
1	-	**	124277	NEW SPEC	02/04/03	
1	-	*A	224280	Corrected dimensions of X cavity offset from 3.52mm to 11.00mm, X cavity pitch from 4.69mm to 14.65mm, Y cavity pitch from 4.10mm to 12.80mm and stack width from 0.16mm to 0.50mm. Changed title from TRAY, BGA 8 X 9.5 X 1.0 to TRAY, BGA 8 X 9.5 X 1.0 MM	05/07/04	
ALL	-	*B	3260353	UPDATED DRAWING BASED ON SUPPLIER'S LATEST DRAWING REVISION CHANGE DRAWING TEMPLATE	05/27/11	QAD/KGL
ALL	-	*C	4582221	SUNSET REVIEW. NO CHANGE.	11/28/14	QAD/UYO

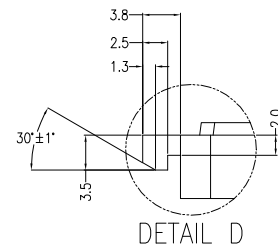
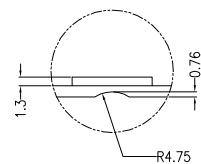
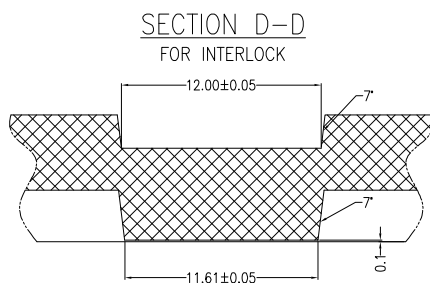
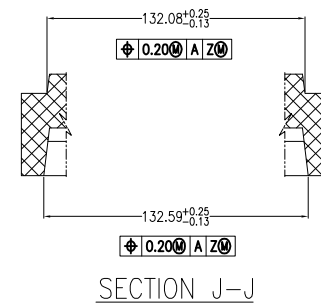
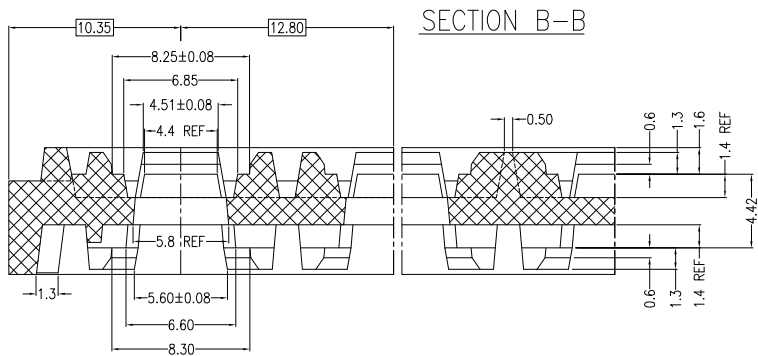
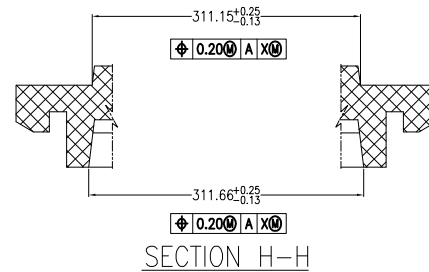
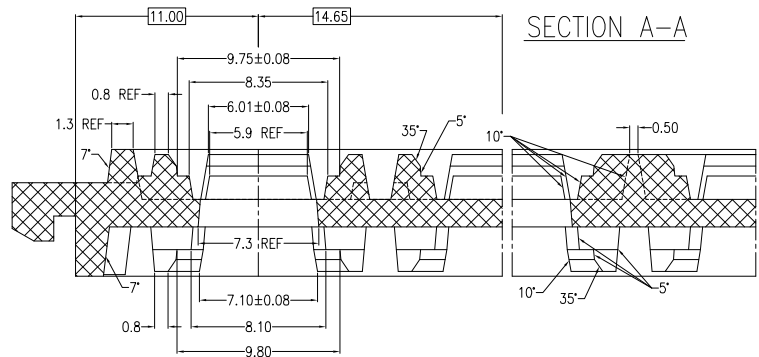


- NOTES:
1. MATERIAL - PP6.
 2. ALL DIMENSIONS ARE IN MILLIMETERS.
 3. TOLERANCES - X.X = ±0.25
- X.XX = ±0.13
UNLESS OTHERWISE SPECIFIED.
DRAFT ANGLES FOR REFERENCE.
 4. ESD - SURFACE RESISTIVITY
- 10⁹ TO 10¹¹ OHMS/SQ.
 5. FOR PACKAGE - BGA8X9.5
 6. SUPPLIER PART NO. : TX BG8X9.5 0.65 1021 6
 7. DATE CODE AT TRAY BOTTOM SIDE.

BLACK	TABG8X9.5-B
RED	TABG8X9.5-R

UNLESS OTHERWISE SPECIFIED ALL DIMENSIONS ARE IN MILLIMETERS STANDARD TOLERANCES ON: DECIMALS .X ± 0.25 .XX ± 0.13 .XXX ± ANGLES ± 0.5°	DESIGNED BY	DATE	 CYPRESS Company Confidential
	DRAWN BY	DATE	
	CHECKED BY	DATE	
	APPROVED BY	DATE	
MATERIAL	SEE NOTES	APPROVED BY	DATE
FINISH		APPROVED BY	DATE
TITLE TRAY, BGA 8 X 9.5 X 1.0 MM			SIZE A
PART NO. TABG8X9.5-*			DWG NO 51-52103
SCALED TO FIT			ENG'G REV
SHEET 1 OF 2			REV *C

THIS DRAWING CONTAINS INFORMATION WHICH IS THE PROPRIETARY PROPERTY OF CYPRESS SEMICONDUCTOR CORPORATION. THIS DRAWING IS RECEIVED IN CONFIDENCE AND ITS CONTENTS MAY NOT BE DISCLOSED WITHOUT WRITTEN CONSENT OF CYPRESS SEMICONDUCTOR CORPORATION.



DETAIL C (BOTTOM VIEW)
NOTE: SCALLOP IS CENTERED ON SIDE OF TRAY

TITLE			
TRAY, BGA 8 X 9.5 X 1.0 MM			
SIZE	PART NO.	DWG NO.	REV
A	TABG8X9.5-*	51-52103	*C
SCALED TO FIT	ENG'C REV	SHEET 2 of 2	

THIS DRAWING CONTAINS INFORMATION WHICH IS THE PROPRIETARY PROPERTY OF CYPRESS SEMICONDUCTOR CORPORATION. THIS DRAWING IS RECEIVED IN CONFIDENCE AND ITS CONTENTS MAY NOT BE DISCLOSED WITHOUT WRITTEN CONSENT OF CYPRESS SEMICONDUCTOR CORPORATION.