



Please note that Cypress is an Infineon Technologies Company.

The document following this cover page is marked as “Cypress” document as this is the company that originally developed the product. Please note that Infineon will continue to offer the product to new and existing customers as part of the Infineon product portfolio.

Continuity of document content

The fact that Infineon offers the following product as part of the Infineon product portfolio does not lead to any changes to this document. Future revisions will occur when appropriate, and any changes will be set out on the document history page.

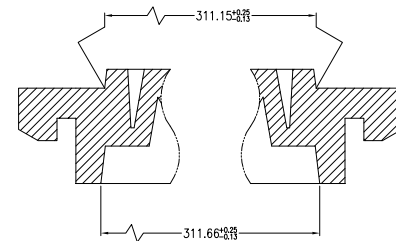
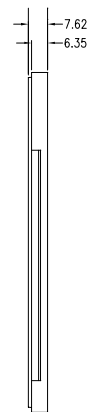
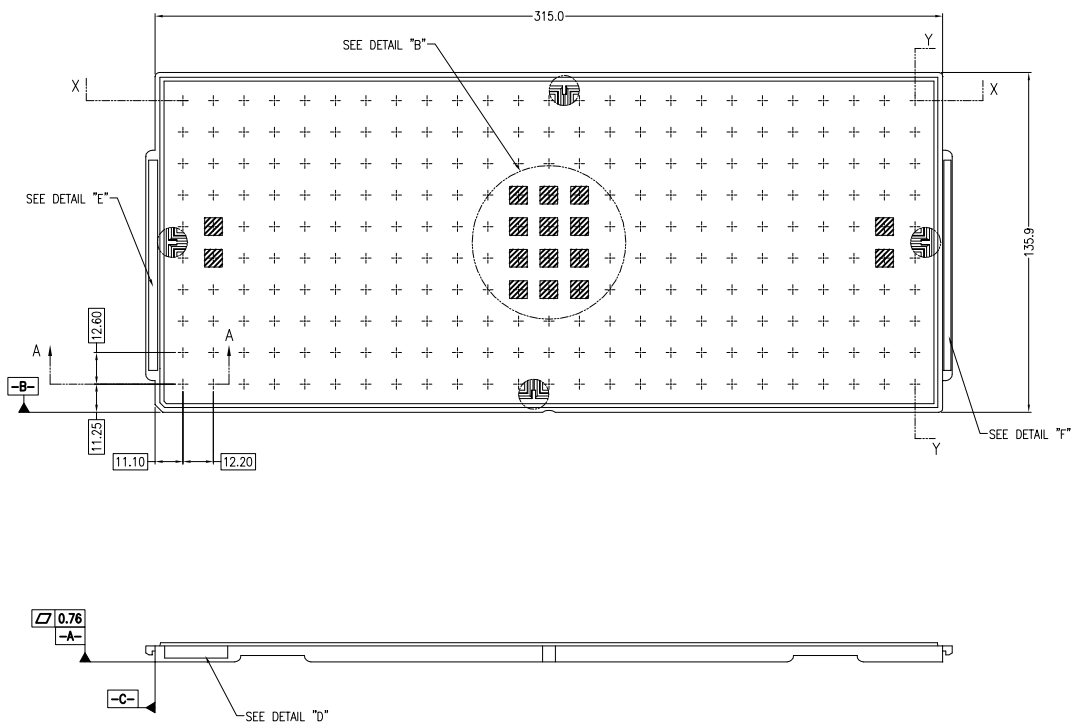
Continuity of ordering part numbers

Infineon continues to support existing part numbers. Please continue to use the ordering part numbers listed in the datasheet for ordering.

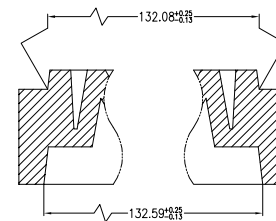
NOTES:

1. TRAYS MUST MEET ALL REQUIREMENTS OF AMKOR/ANAM # 01-0431-2283 PROCUREMENT SPEC FOR SHIPPING TRAY.
2. BAKEABLE TRAYS ARE INTENDED TO BE CONTINUOUSLY BAKED FOR 48 HOURS AT THE BAKE TEMPERATURE AS SPECIFIED.
3. THERE ARE 250 UNITS PER TRAY.
4. TRAY VACUUM PICKUP METHOD REQUIRES A 28 MM SQUARE (MINIMUM) WALLED PICKUP AREA, LOCATED AS CLOSE TO THE CENTER OF THE TRAY AS IS PRACTICABLE.
5. CHAMFER DENOTES PACKAGE PIN#1 ORIENTATION.
6. INTERPRET DIMENSIONS AND TOLERANCES IN ACCORDANCE WITH ASME Y14.5M-1994.
7. CONTROLLING DIMENSIONS ARE IN MILLIMETERS.
8. REVISION LETTER SHALL BE ENGRAVED TO THE RIGHT OF THE SID NUMBER ON SIDE OF TRAY AND SHALL BE CHANGED IN ALPHABETICAL ORDER (A-Z) WHEN ANT CHANGE OF DIMENSIONS, DESIGN AND/OR MATERIAL PROPERTIES OCCUR.
9. ESD-SURFACE RESISTIVITY SHALL BE $\geq 1 \times 10^9 < 1 \times 10^{12}$ OHMS/SQUARE PER EIA, JEDEC, ACH TRAY SPECIFICATION.
10. MEETS JEDEC CS-007.

| REVISIONS | | | | | | |
|-----------|------|-----|---------|---|----------|----------|
| PAGE | ZONE | REV | ECN | DESCRIPTION | DATE | APPROVED |
| 1 | - | ** | 47245 | NEW RELEASE | 11/25/96 | |
| ALL | - | *A | 3164250 | UPDATE DRAWING CHANGE DRAWING TEMPLATE | 02/21/11 | QAD/KGL |
| ALL | - | *B | 3532453 | REMOVE LAYER COLORS ON PDF FILE. | 02/23/12 | QAD/AZY |
| ALL | - | *C | 4693153 | NO CHANGE -- SUNSET REVIEW | 03/18/15 | QAD/UYO |



SECTION "X-X"
SCALE : 6/1



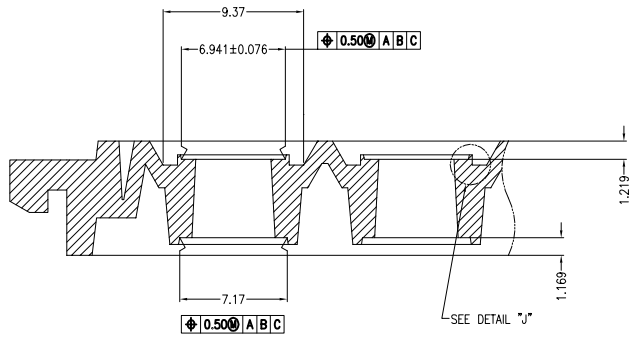
SECTION "Y-Y"
SCALE : 6/1

TRAY STACKING DETAIL

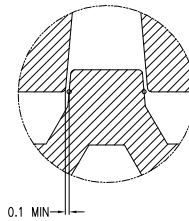
| | | | | |
|-------------|--------------------------|-------|-----------|-------------|
| BAKABLE | POLY ETHER SULFONE (PES) | BLACK | 1212737 | B |
| DESCRIPTION | MATERIAL | COLOR | S.I.D NBR | REV. LETTER |

| | | | |
|--|--------------------|------------------|---|
| UNLESS OTHERWISE SPECIFIED ALL DIMENSIONS ARE IN MILLIMETERS STANDARD TOLERANCES ON: DECIMALS .X ± 0.25 .XX ± 0.13 .XXX ± 0.13 ANGLES ± 0.5° | DESIGNED BY | DATE | CYPRESS Company Confidential |
| | DRAWN BY AQQ | DATE 02/23/12 | |
| | CHECKED BY | DATE | |
| | APPROVED BY QAD | DATE 02/23/12 | |
| MATERIAL SEE TABLE | APPROVED BY AZY | DATE 02/23/12 | TITLE TQFP TRAY 7 X 7 X 1.0 (ANAM) |
| FINISH | APPROVED BY | DATE | SIZE A PART NO. TA7710A DWG NO 51-52018 REV *C |
| SCALED TO FIT | | | SHEET 1 OF 2 |

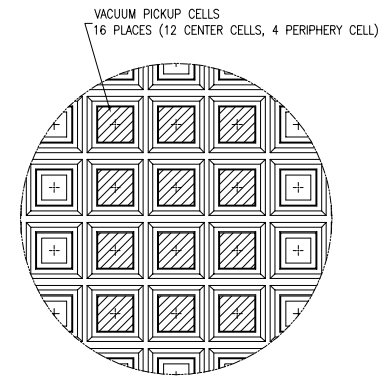
THIS DRAWING CONTAINS INFORMATION WHICH IS THE PROPRIETARY PROPERTY OF CYPRESS SEMICONDUCTOR CORPORATION. THIS DRAWING IS RECEIVED IN CONFIDENCE AND ITS CONTENTS MAY NOT BE DISCLOSED WITHOUT WRITTEN CONSENT OF CYPRESS SEMICONDUCTOR CORPORATION.



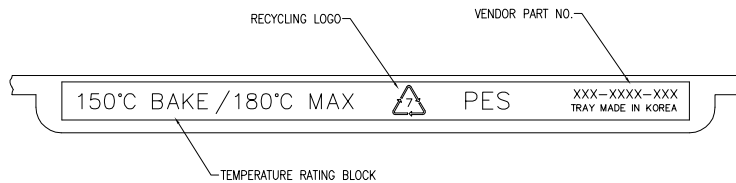
SECTION "A-A"
SCALE : 6/1



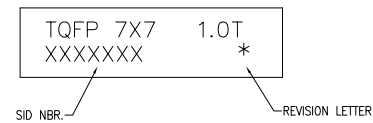
SLIP LOCK SECTION



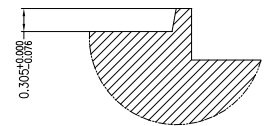
TOP VIEW
DETAIL "B"



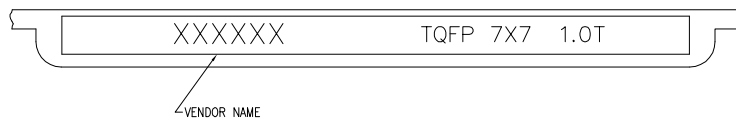
DETAIL "F"



DETAIL "D"



DETAIL "J"
SCALE : 30/1
INNER FENCE



DETAIL "E"



TITLE
TQFP TRAY 7 X 7 X 1.0 (ANAM)

| | | | |
|---------------|---------------------|--------------------|-----------|
| SIZE A | PART NO. TA7710A | DWG NO 51-52018 | REV *C |
| SCALED TO FIT | | SHEET 2 OF 2 | |

THIS DRAWING CONTAINS INFORMATION WHICH IS THE PROPRIETARY PROPERTY OF CYPRESS SEMICONDUCTOR CORPORATION. THIS DRAWING IS RECEIVED IN CONFIDENCE AND ITS CONTENTS MAY NOT BE DISCLOSED WITHOUT WRITTEN CONSENT OF CYPRESS SEMICONDUCTOR CORPORATION.