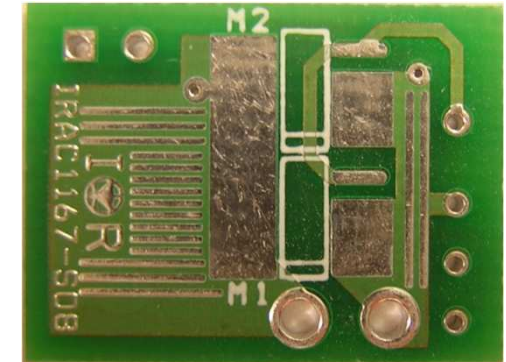
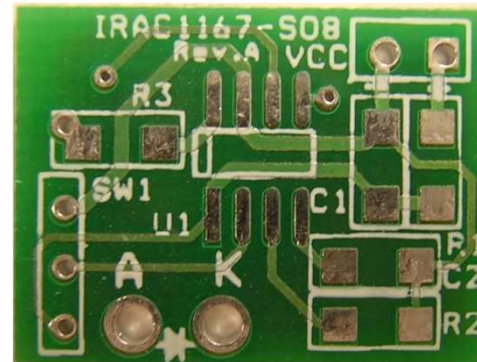




## IR1167 SmartRectifier™ SO8 daughtercard

ID	SMD size	description
U1	SOIC8	IR1167A/BS
R1	1206	V <sub>CC</sub> series resistor
R2	1206	MOT resistor
R3	1206	Gate resistor
C1	1206	Decoupling capacitor
C2	1206	Enable capacitor
M1 M2	SOIC8	Synchronous FETs



SW1 needs to be set  
according to the following table  
(see AN1087 for details)

System mode of operation	OVT connected to (typical values)
DCM or CrCM	Ground, V <sub>TH1</sub> = -3.5mV
Boundary CCM	Floating, V <sub>TH1</sub> = -10.5mV
CCM	V <sub>CC</sub> , V <sub>TH1</sub> = -19mV

