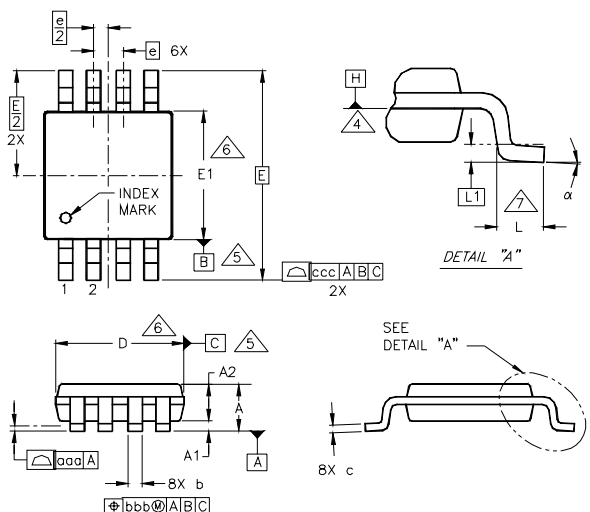
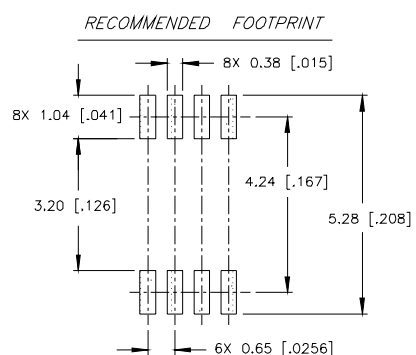


Micro8 Package Outline

Dimensions are shown in millimeters (inches)



SYMBOL	DIMENSIONS					
	MILLIMETERS			INCHES		
	MO-187AA			MO-187AA		
A	---	---	1.10	---	---	.043
A1	0.05	0.10	0.15	.002	---	.005
A2	0.78	0.86	0.94	.031	.034	.037
b	0.25	0.33	0.40	.010	.013	.015
c	0.13	0.18	0.23	.006	---	.009
D	2.90	3.00	3.10	.115	.118	.122
E	4.90 BSC			.193 BSC		
E1	2.90	3.00	3.10	.115	.118	.122
e	0.65 BSC			.026 BSC		
L	0.40	0.55	0.70	.016	.022	.027
L1	0.25 BSC			.010 BSC		
α	0°	---	6°	0°	---	6°
aaa	0.10			.004		
bbb	0.08			.003		
ccc	0.25			.010		



- NOTES
1. DIMENSIONING AND TOLERANCING PER ASME Y14.5M-1994.
 2. DIMENSIONS ARE SHOWN IN MILLIMETERS AND [INCHES].
 3. CONTROLLING DIMENSION: MILLIMETER.
4. DATUM PLANE H IS LOCATED AT THE BOTTOM OF THE MOLD PARTING LINE COINCIDENT WITH WHERE THE LEAD EXITS THE BODY.
5. DATUMS B AND C TO BE DETERMINED AT DATUM PLANE H.
6. DIMENSIONS D AND E1 ARE DETERMINED AT DATUM PLANE H.
7. L IS THE LEAD LENGTH FOR SOLDERING TO A SUBSTRATE.
8. OUTLINE CONFORMS TO JEDEC OUTLINE MO-187AA.

LEAD ASSIGNMENTS

