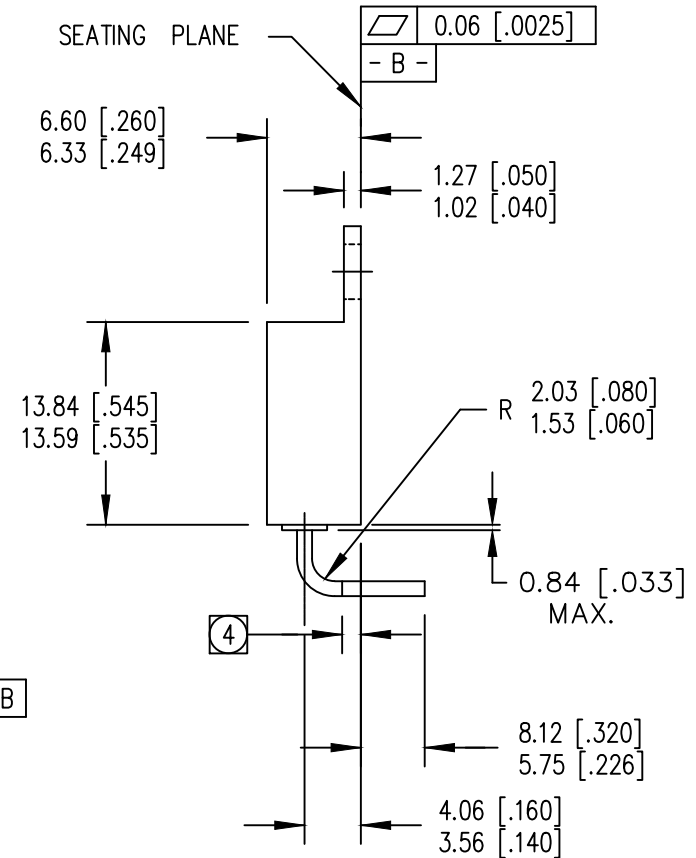
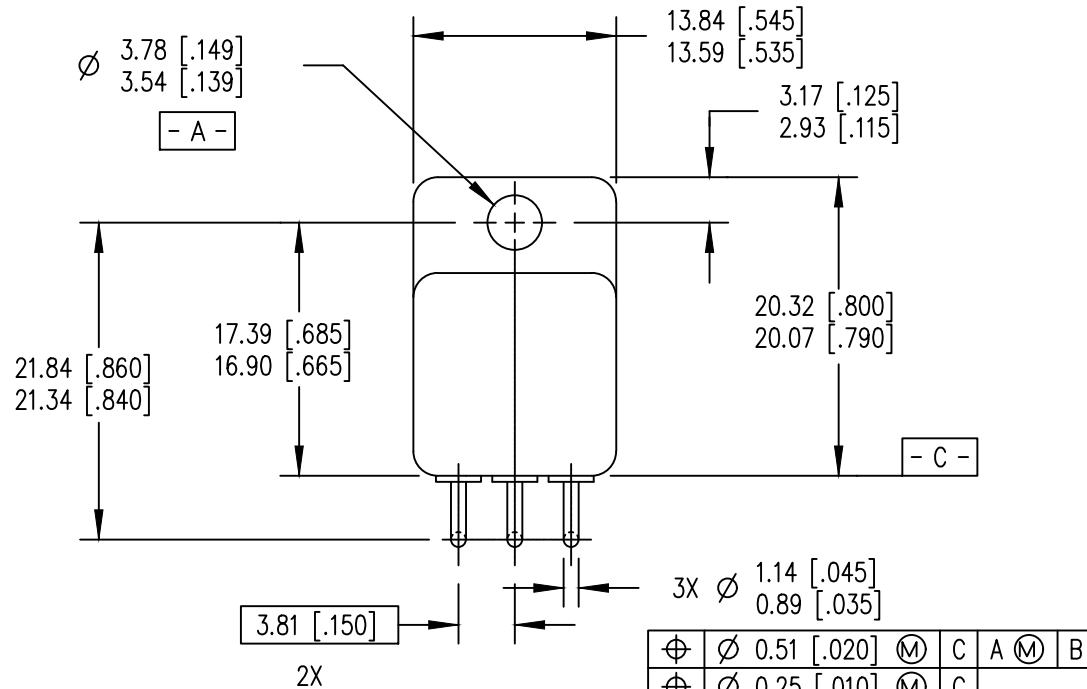


REV.	DESCRIPTION	ECN	DATE
E	INITIAL RELEASE	1120_ER6904	4-3-20



NOTES:

1. DIMENSIONING & TOLERANCING PER ANSI Y14.5M-1982.
2. DIMENSIONS ARE SHOWN IN MILLIMETERS [INCHES].
3. CONTROLLING DIMENSION: INCH.
- 4 LEADS ARE SOLDER DIPPED 1.27 [.050] MINIMUM BEYOND THE SEATING PLANE.

5. FORM LEADS USING AUTO LEAD BEND MACHINE (ES02526) WITH TO-254, 90° LEAD FORM DOWN FIXTURE (F021369).
6. STANDARD FINAL FINISH ON ALL TERMINALS IS SOLDER ALLOY 63%Sn 37%Pb.

IOR HiRel
An Infineon Technologies Company

TITLE: TO-254AA LEADFORM
90° DOWN, PACKAGE OUTLINE

DRAWING NO. D100709G-WEB REV E