

THIS DOCUMENT AND THE DATA DISCLOSED HEREIN OR HEREWITH IS NOT TO BE REPRODUCED, USED, OR DISCLOSED IN WHOLE OR IN PART TO ANYONE WITHOUT THE PERMISSION OF INTERNATIONAL RECTIFIER CORPORATION.

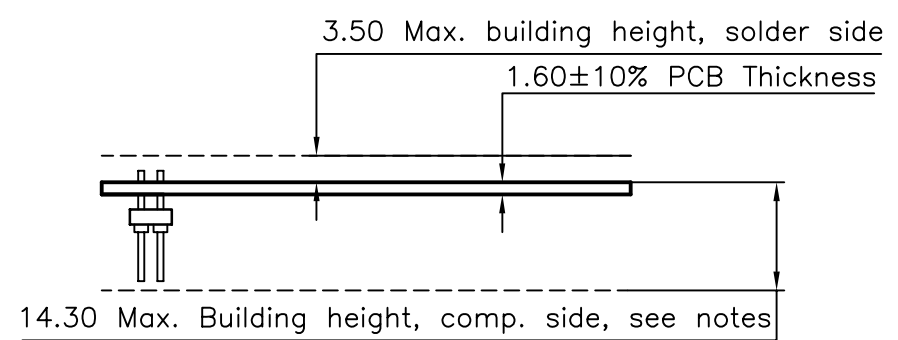
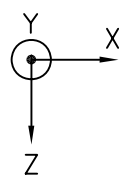
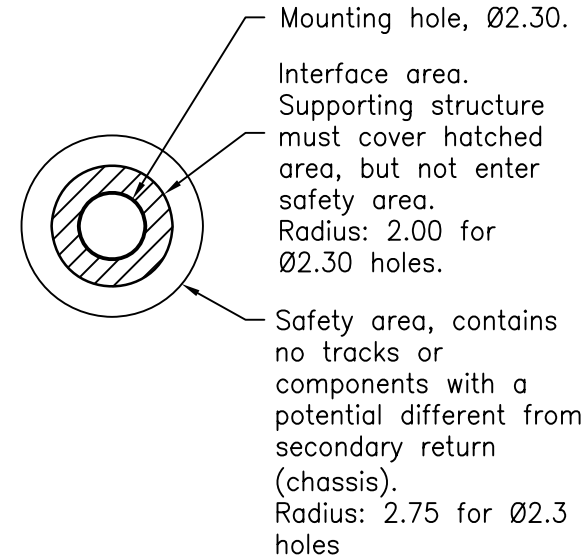
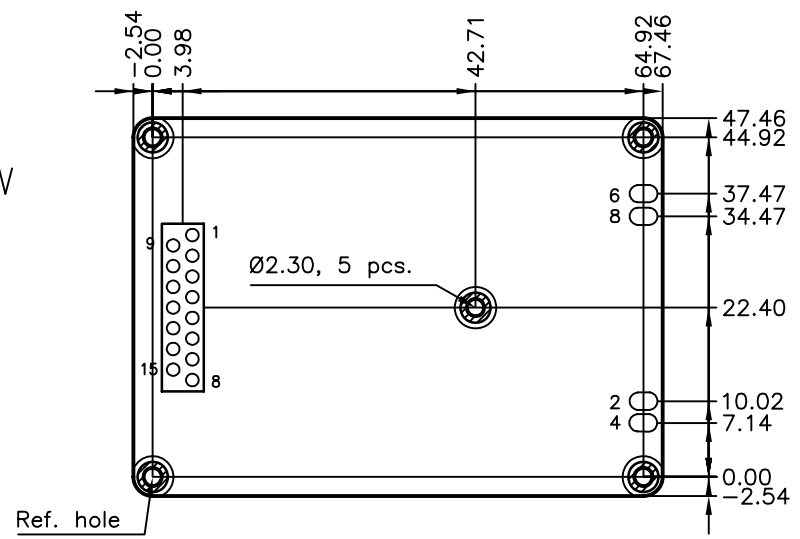
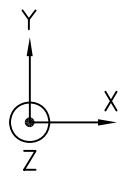
REVISIONS				
ZONE	REV.	ECO	DESCRIPTION	APPROVED/DATE

INPUT TERMINALS ASSIGNMENT LIST	
IDENT.: Input terminals (solder pins, straight)	
PIN NO.	Function
1	INPUT POWER RETURN
9	INPUT POWER RETURN
2	RESERVED
10	RESERVED
3	INPUT POWER
11	INPUT POWER
4	CHASSIS
12	VOLTAGE TM
5	CHASSIS
13	TC ON RETURN
6	TC ON
14	TC OFF RETURN
7	TC OFF
15	TM STATUS RETURN
8	TM STATUS

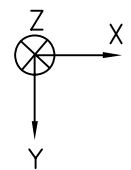
OUTPUT TERMINAL ASSIGNMENT LIST	
IDENT.: Output Terminals (solder pads)	
PIN NO.	FUNCTION
1, 2	V1 (positive output)
3, 4	CHASSIS
5, 6	CHASSIS
7, 8	V2 (negative output)

MECHANICAL INTERFACE	
TOLERANCES	General: $\pm 0.2\text{mm}$ (unless otherwise noted) Fixing Holes: $\pm 0.10\text{mm}$ Connector Position: N/A
MOUNTING SURFACE	Flatness: N/A Roughness: N/A
UNIT FIXING SCREWS	5 pcs. Proposed size: M2 or equivalent
TIGHTENING TORQUES	Unit mounting screws: M2 or equivalent: $30\text{Ncm} \pm 5\text{Ncm}$
C.O.G. RELATIVE TO RH	X = N/A mm Y = N/A mm Z = N/A mm
M.O.I. RELATIVE TO C.O.G	$I_{xx} = \text{N/A kg}\cdot\text{cm}^2$ $I_{yy} = \text{N/A kg}\cdot\text{cm}^2$ $I_{zz} = \text{N/A kg}\cdot\text{cm}^2$

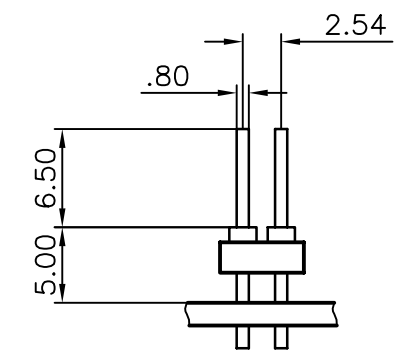
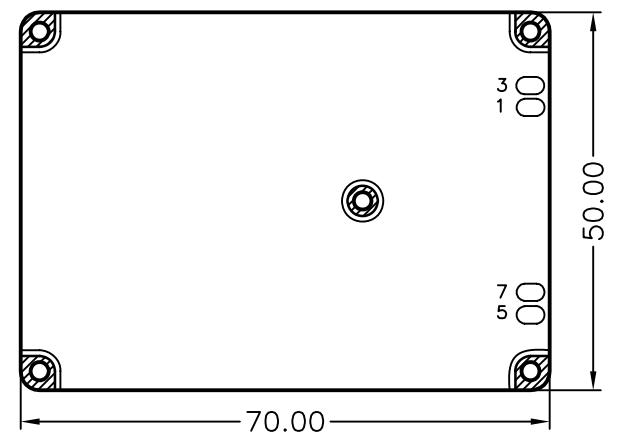
Top view



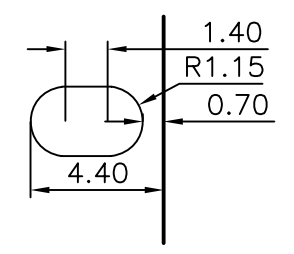
FIXING HOLES DETAILED VIEW



Bottom view



INPUT TERMINALS
Round shape
Pitch 2.54x2.74



OUTPUT TERMINALS
Solder Pads

NOTES:
* All dimensions in millimeters.
* Scale: 1:1
* PCB Material: Polyimide-glass fiber.
* No isolation distance has been added to specified building heights
* Potential of fixation screws: Chassis

IRDC DWG NO. IRD-618-1-ICD		DRAWN BY: Anders Guldelt 22sep11		DATE: 22sep11		H/Ref: 2300 Junction Avenue San Jose, CA 95134 (408)431-3000	
MATERIAL:		VERIFIED BY:		DATE:		TITLE: INTERFACE CONTROL DRAWING MODEL NO.: ML series	
FINISH:		PA APPROVED BY:		DATE:		SIZE: FSCM NO. D152467 DRAWING NO. ICD-173xxx REV.	
NEXT ASSY:		PM APPROVED BY:		DATE:		SCALE: FILE SHEET 1 OF 1	
APPLICATION: DO NOT SCALE DRAWING		DATE:		DATE:		DATE:	