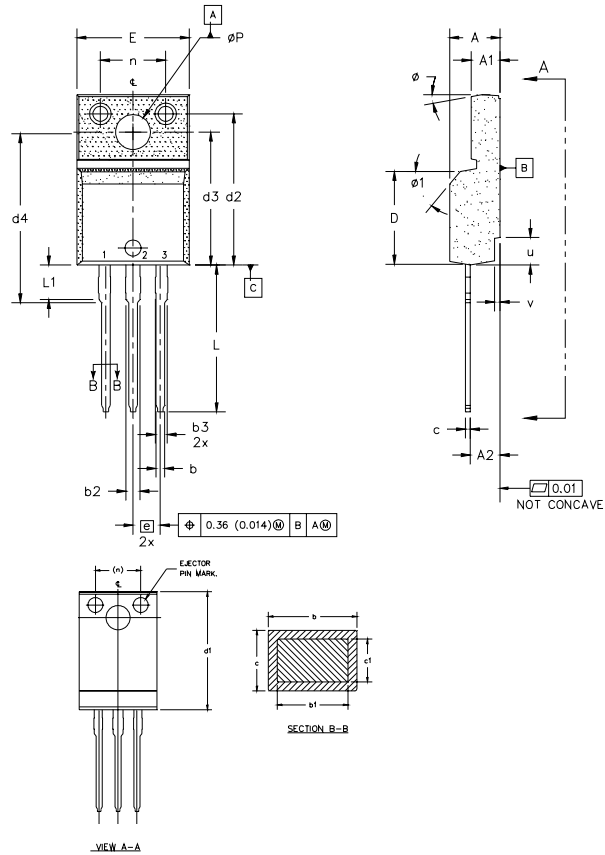


TO-220 Full-Pak Package Outline



NOTES:

1.0 DIMENSIONING AND TOLERANCING PER ASME Y14.5 M- 1994.

2.0 DIMENSIONS ARE SHOWN IN MILLIMETERS [INCHES].

3.0 LEAD DIMENSION AND FINISH UNCONTROLLED IN L1.

4.0 DIMENSION D & E DO NOT INCLUDE MOLD FLASH. MOLD FLASH SHALL NOT EXCEED 0.005" (0.127) PER SIDE. THESE DIMENSIONS ARE MEASURED AT THE OUTERMOST EXTREMES OF THE PLASTIC BODY.

5.0 DIMENSION b1 APPLY TO BASE METAL ONLY.

6.0 STEP OPTIONAL ON PLASTIC BODY DEFINED BY DIMENSIONS u & v.

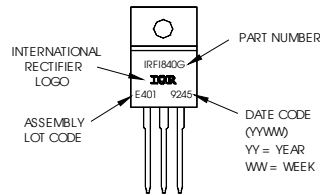
7.0 CONTROLLING DIMENSION : INCHES.

SYMBOL	DIMENSIONS				NOTES	LEAD ASSIGNMENTS	
	MILLIMETERS		INCHES				
	MIN.	MAX.	MIN.	MAX.			
A	4.57	4.83	0.180	0.190	5	<u>HEXFET</u> 1.- GATE 2.- DRAIN 3.- SOURCE	
A1	2.57	2.83	0.101	0.114			
A2	2.51	2.85	0.099	0.112			
b	0.622	0.89	0.024	0.035			
b1	0.622	0.838	0.024	0.033			
b2	1.229	1.400	0.048	0.055			
b3	1.229	1.400	0.048	0.055			
c	0.440	0.629	0.017	0.025			
c1	0.440	0.584	0.017	0.023			
D	8.65	9.80	0.341	0.386		4 <u>IGBTs, CoPACK</u> 1.- GATE 2.- COLLECTOR 3.- EMITTER	
d1	15.80	16.12	0.622	0.635	4		
d2	13.97	14.22	0.550	0.560			
d3	12.30	12.92	0.484	0.509			
d4	8.64	9.91	0.340	0.390			
E	10.36	10.63	0.408	0.419			
e	2.54 BSC		0.100 BSC				
L	13.20	13.73	0.520	0.541			
L1	3.10	3.50	0.122	0.138			
n	6.05	6.15	0.238	0.242			
φP	3.05	3.45	0.120	0.136			
u	2.40	2.50	0.094	0.098	6		
v	0.40	0.50	0.016	0.020			
ø	3"	7"	3"	7"			
ø1		45'		45'			

TO-220 Full-Pak Part Marking Information

Notes: This part marking information applies to all devices produced before 02/26/2001 and currently for parts manufactured in GB.

EXAMPLE: THIS IS AN IRF1840G
WITH ASSEMBLY
LOT CODE E401



Notes: This part marking information applies to devices produced after 02/26/2001 in location other than GB.

EXAMPLE: THIS IS AN IRF1840G
WITH ASSEMBLY
LOT CODE 3432
ASSEMBLED ON WW24 1999
IN THE ASSEMBLY LINE "K"

