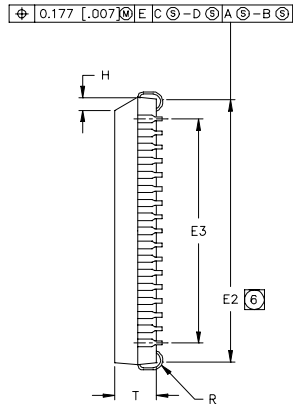
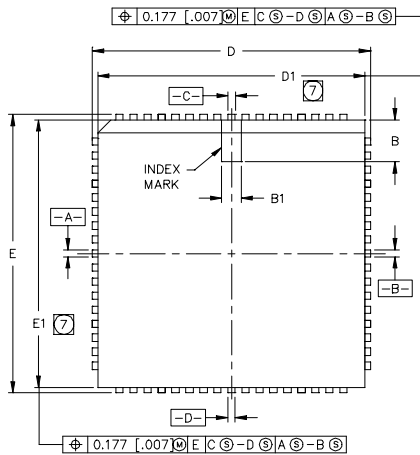
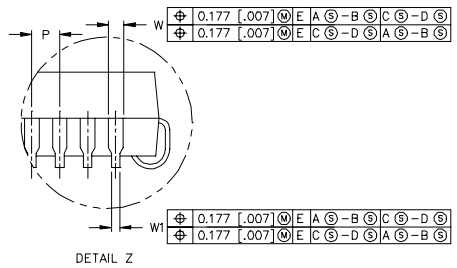
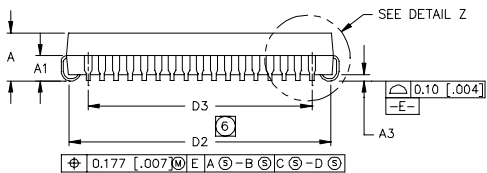


Package Dimensions - 68 Lead PLCC



DIM	MILLIMETERS		INCHES	
	MIN	MAX	MIN	MAX
A	4.20	5.08	.165	.200
A1	2.29	3.30	.090	.130
A3	0.51	—	.020	—
B	—	3.81	—	.150
B1	—	1.90	—	.075
D	25.02	25.27	.985	.995
D1	24.13	24.33	.950	.958
D2	22.61	23.62	.890	.930
D3	20.32	BSC	.800	REF.
E	25.02	25.27	.985	.995
E1	24.13	24.33	.950	.958
E2	22.61	23.62	.890	.930
E3	20.32	BSC	.800	REF.
H	1.067	1.219	.042	.048
P	1.27	BSC	.050	BSC
R	0.64	1.14	.025	.045
W	0.661	0.812	.026	.032
W1	0.331	0.533	.013	.021



NOTES:

1. DIMENSIONING & TOLERANCING PER ANSI Y14.5M-1982.
2. DIMENSIONS SHOWN IN MILLIMETERS [INCHES].
3. CONTROLLING DIMENSION: INCH.
4. CONFORMS TO JEDEC OUTLINE MS-018AC.
5. DATUMS -A-, -B-, -C-, & -D- ARE DETERMINED BY WHERE THE TOP OF THE LEADS EXIT PLASTIC BODY AT MOLD PARTING LINE.

- ⑥ TO BE MEASURED AT -E- SEATING PLANE.
- ⑦ DIMENSIONS DO NOT INCLUDE MOLD FLASH, ALLOWABLE FLASH IS 0.254 [.010].